

Biography Of Whitney Perkins Witt



Whitney Perkins Witt, PhD, MPH, is internationally esteemed for her leadership and scholarly contributions to population health, health equity, and health innovation. With three decades of career, she has expertly led multidisciplinary teams to develop strategic health initiatives, conduct pivotal research, and initiate groundbreaking community health and technical assistance programs. Her work has significantly impacted healthcare delivery and financing, improving cost,

quality, and patient outcomes, highlighted by her successful acquisition of federal and foundation funding, influential publications, and leadership roles.

Comprehensive Research and Leadership



In her illustrious career, Dr. Witt has been at the forefront of research on equity and the social determinants of health (SDOH). As a principal investigator and program director, she has managed multimillion-dollar research studies and technical assistance projects funded by premier federal agencies, including the Centers for Medicare & Medicaid Services (CMS), the Health Resources and Services Administration (HRSA), the National Institutes of Health (NIH), and the Agency for Healthcare Research and Quality (AHRQ). Her collaborative efforts extend to projects funded by the Veterans Administration (VA), the Substance Abuse and Mental Health Services Administration (SAMHSA), and the Centers for Disease Control (CDC), alongside significant foundational support from entities such as the Robert Wood Johnson (RWJ) Foundation and the American Cancer Society (ACS).

Varied Professional Experience Across Sectors



Whitney Perkins Witt's professional experience encompasses a broad spectrum, spanning academia, private corporations, nonprofit organizations, and government. As the inaugural Dean of the College of Health at Lehigh University, she was critical in establishing the university's first educational programs focused on population health and health innovation, managing extensive budgets and operations with adept skill.

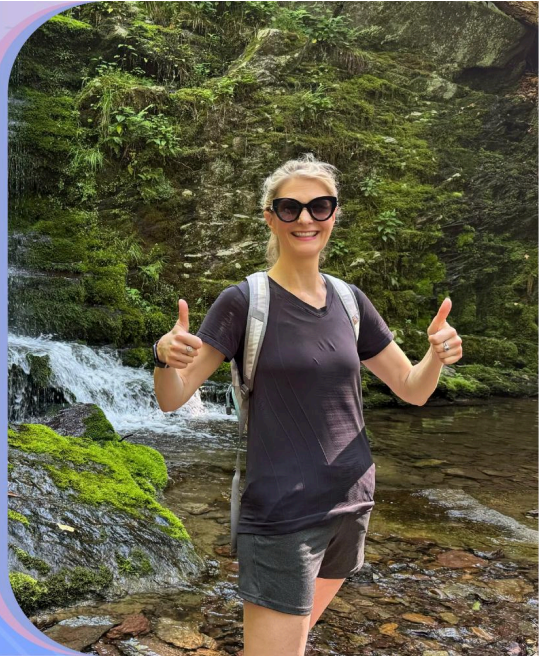
Strategic Leadership and Partnership Building

Dr. Witt is recognized for her strategic insight in developing partnerships and fostering collaborative team decision-making. Her ability to build networks with vital external partners has been instrumental in her success in raising funds for various health initiatives. These partners include US-based and international academic institutions, corporations, non-governmental organizations, foundations, and government entities.

Leadership Roles and Industry Impact

Whitney Perkins Witt

Thirty years in health strategy and team leadership.



Dr. Witt serves as the President and Chief Executive Officer (CEO) of the Health Equity Consulting (HEC) Group, leading efforts to address health equity challenges through innovative and comprehensive strategies. She is also Vice President of Social Determinants of Health (SDOH) at Highmark Health, where she directs enterprise-wide initiatives to improve community health and address SDOH to enhance health outcomes.

Educational Background and Prior Roles



Whitney Perkins Witt

Led multimillion-dollar research on health equity and SDOH.

Before her current positions, Dr. Witt's previous roles included vice president at AmeriSpeak and inaugural Dean at Lehigh University's College of Health. Her academic journey has included appointments at prestigious institutions such as Harvard Medical School, Northwestern's Feinberg School of Medicine, and the University of Wisconsin–Madison. She completed her advanced degrees in Health Policy and Management and Public Health at Johns Hopkins Bloomberg School of Public Health and holds a bachelor's degree in Law and Women's Studies from Hampshire College.

Whitney Perkins Witt's contributions through her leadership, research, and academic roles continue to shape the landscape of public health, promoting advancements in health equity and innovation globally.