



THE RIGHT FIT LEADING PROCESS

An Overview

Dr. Michael A. Brown Sr, PhD
<https://www.rightfitcomm.com>

© Right Fit Communications LLC



- ▶ **Me:** Retired Air Force, Public Affairs Pro, Author, Educator, Football Coach
- ▶ **The Right Fit Leading (RFI) Process** is a method to handle leader and team development in any situation. I won't go into depth here, but we can discuss later.
- ▶ **Emotional Intelligence (EI)** is your ability to handle your emotions and those of others. It is the capacity to be aware of, control, and express your emotions while handling the emotions of others. Our goal is to handle interpersonal or work relationships with empathy and good judgment.

OVERVIEW

Dr. Michael A. Brown Sr, PhD
<https://www.rightfitcomm.com>

© Right Fit Communications LLC

An Agile Approach to Leadership:

The Right Fit Leading Process



3D

Dedication
Detail
Discipline

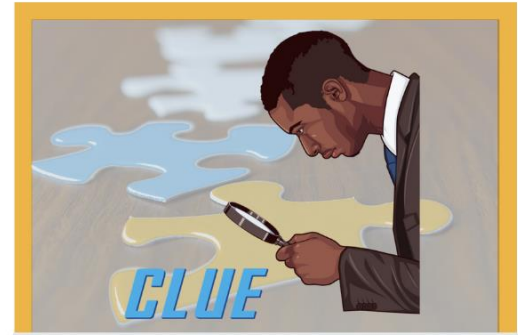
Philosophy



RAMP

Relate
Anticipate
Motivate
Participate

Inspiration



CLUE

Connect
Listen
Understand
Engage

Motivation



Right Fit Communications LLC, www.rightfitcomm.com

© Right Fit Communications LLC

Leadership

*Reduce
Stressful
Situations*

*Embrace Your
Emotions*

*Connect
Thoughts with
Emotions*

*Take
Responsibility*

*Developing
Emotional
Intelligence*

*Think Before
You Act*

*Control Non-Verbal
Communication*

*Demonstrate
Humility and
Humor*

Rewards

Included in the IGI Global e-Book Collection

Features:

- Over **7,300+** Peer Reviewed Reference Books
- Hosted on the InfoSci® Platform
- Remote Access Options
- **No DRM** & No Embargo of Content

These publications are also available in smaller e-book collections, including discipline-based, subject-based, and topic-based e-Book Collections.

